

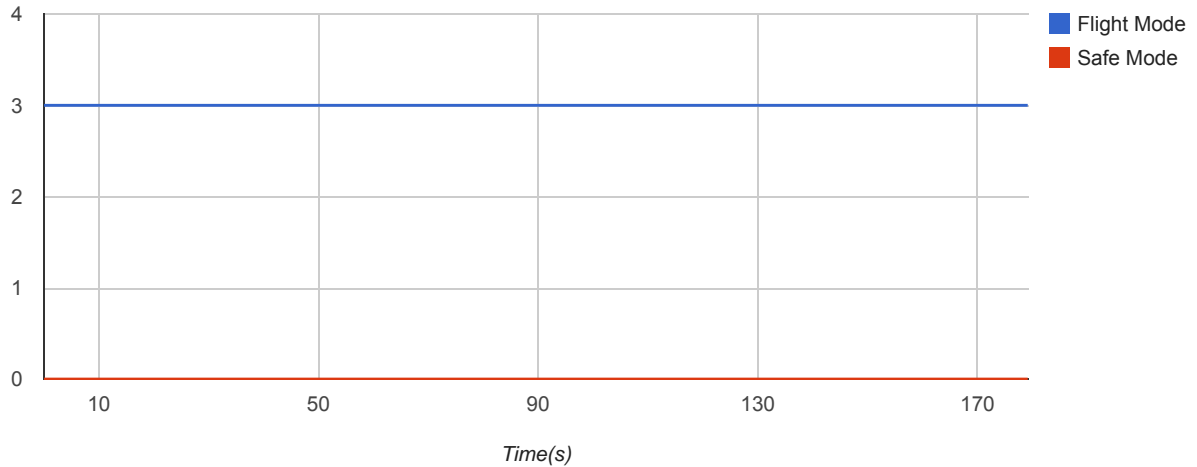
XAIRCRAFT Blackbox Beta 0.5**SuperX Flight Report****Basic Information**

Hardware	v1.00	Firmware	v1.08	ESC Type	Standard ESC
Fly Date(UTC)	2014-07-10	Flight Time	00:02:59.180	Flight Counter	Power on: 48 / Take-off: 1

Flight

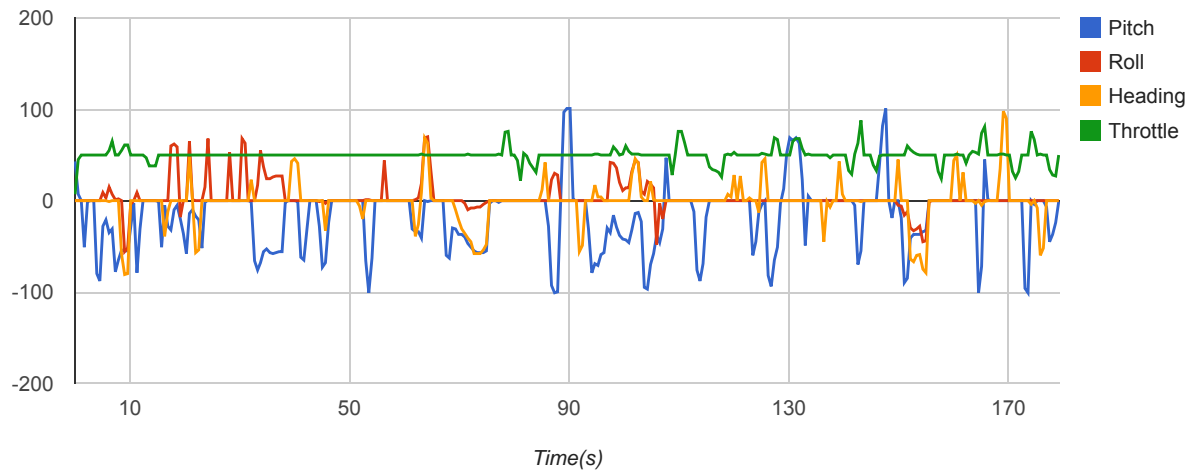
	Throttle(RC)	Pitch(F/B)	Roll(L/R)	Velocity(Horizontal)	Velocity(Verticle)
Max.	88	28.5/21.4	20.8/24.8	18.70km/h	3.52m/s
Min	7	0.0/0.0	0.0/0.0	0.07km/h	-2.09m/s
Avg.	50	5.4/1.8	2.2/3.3	5.46km/h	

Flight Mode and Safe Mode

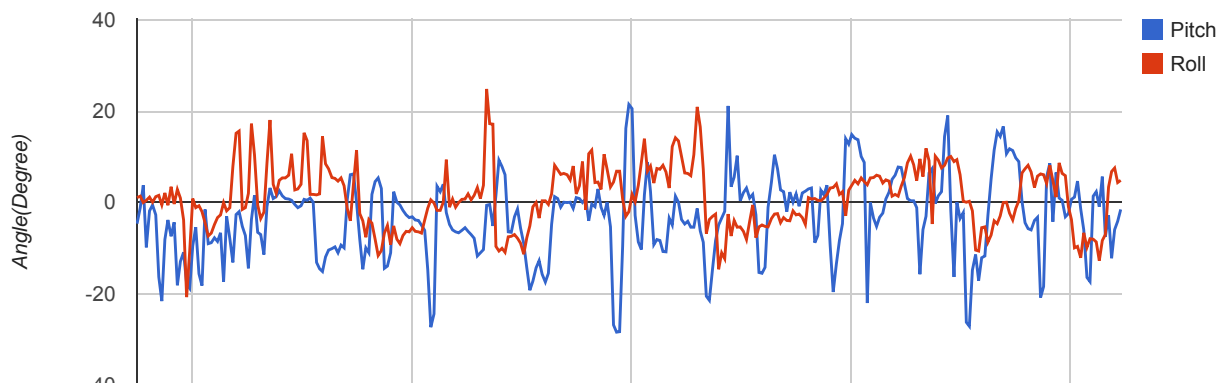


Flight Mode: 1 = Manual, 2 = Attitude, 3 = GPS Attitude
Safe Mode: 0 = OFF, 1 = ON

Remote Control



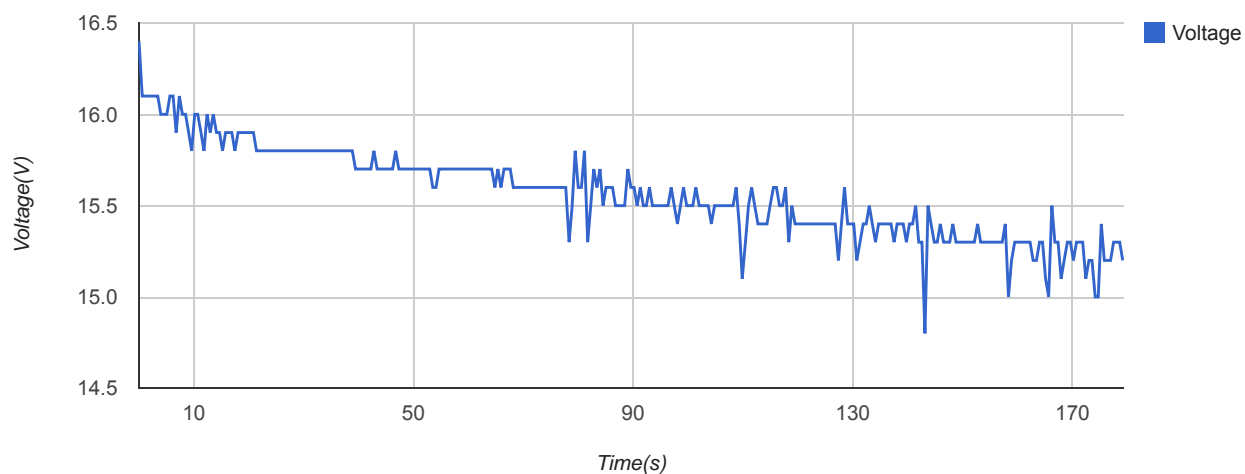
Attitude



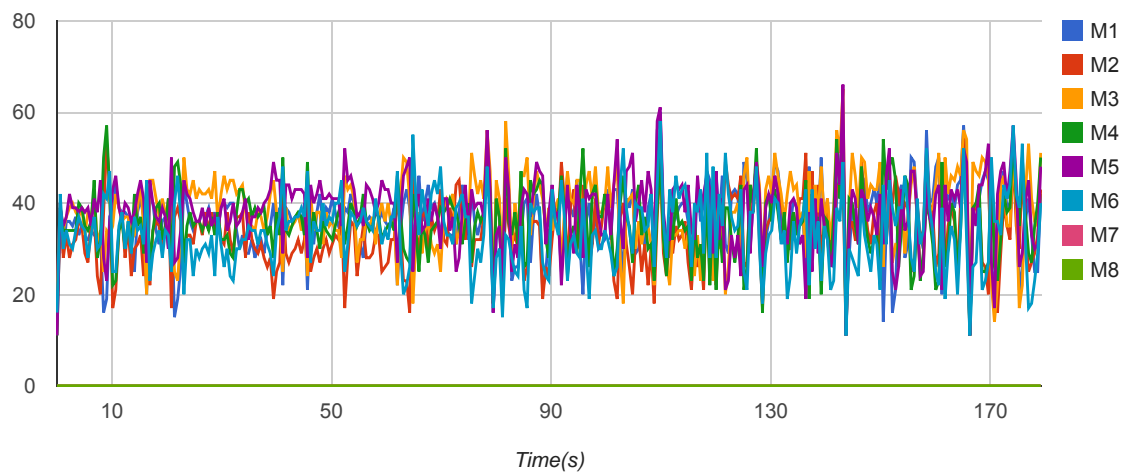
Power

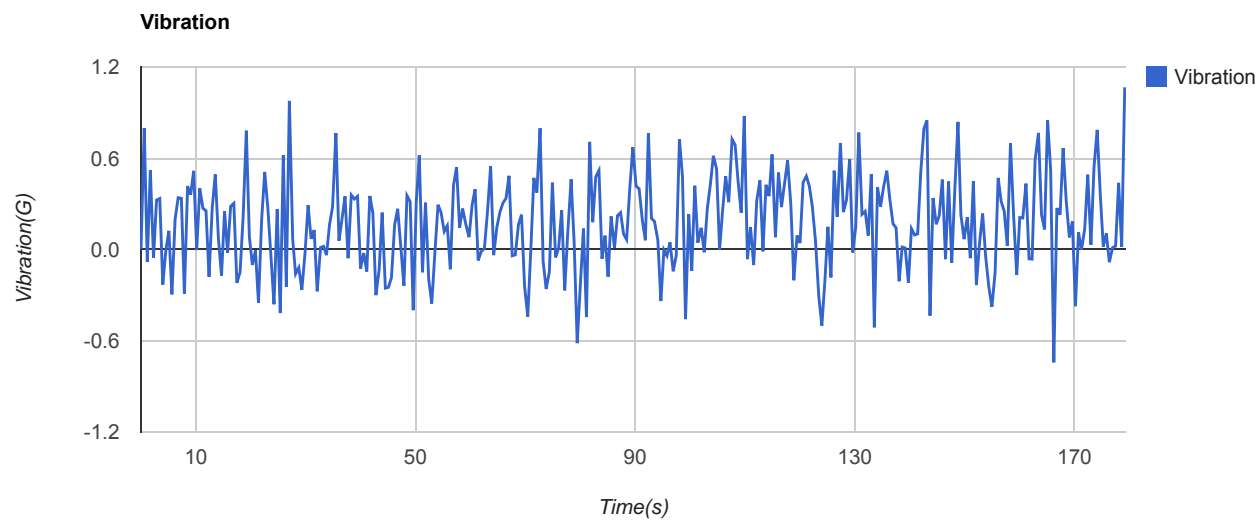
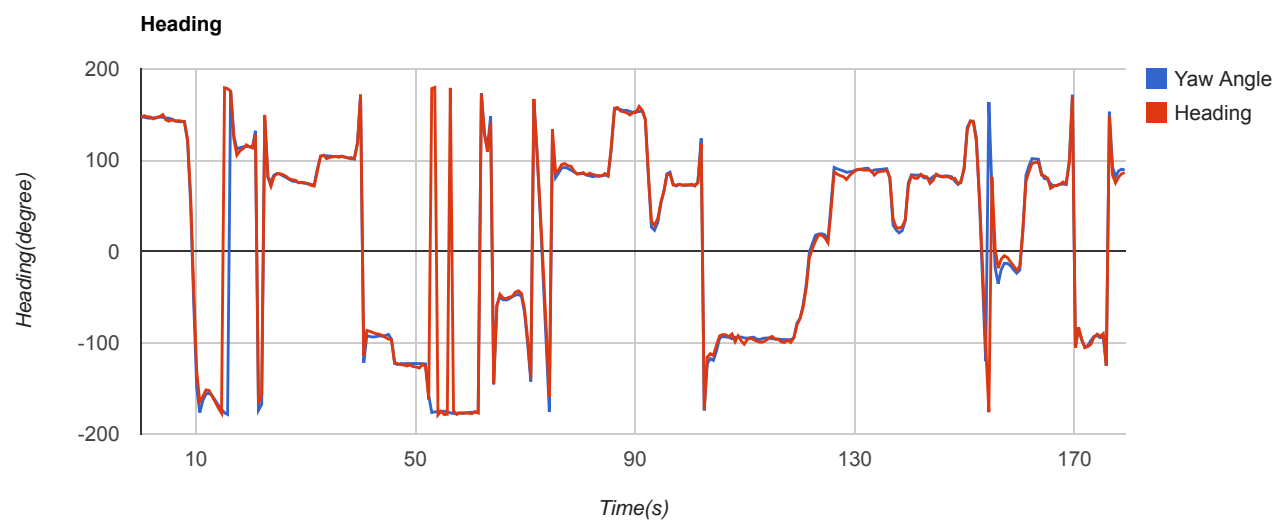
	Voltage	M1	M2	M3	M4	M5	M6	M7	M8
Max.	16.40V	60%	55%	65%	57%	66%	58%	0%	0%
Min	14.80V	11%	11%	11%	11%	11%	11%	0%	0%
Avg.	15.56V	36%	33%	38%	36%	38%	34%	0%	0%

Battery Voltage



Motor Outputs(%)



Vibration**Heading & Terrestrial Magnetism**

North:0 degree East:90 Degree South:±180 Degree West:-90 Degree
Heading:from compass